



NIU at Eastern Mich.

01/13/26 George Gervin GameAbove Center , Ypsilanti
2025-26 Men's Basketball

Game Time: 6:30 PM
Game Duration: 2:01
Attendance: 1,749

Officials: John Floyd, King Whetstone, Chris Fuller

NIU - 59

Record: 5-11 (1-4)

NO.	Name	F	Min	FG			3P			FT			Rebounds			Fouls		TP	AS	TO	ST	Blocks		+/-
				M-A	M-A	M-A	OR	DR	TOT	PF	FD	OR	DR	TOT	BS	BA								
96	Gustav Winther	F	29:10	3-6	0-0	1-3	0	4	4	4	3	7	2	0	0	2	2	0	0	2	2	-14		
0	Gianni Cobb	G	35:33	4-9	0-1	1-2	0	3	3	3	6	9	7	2	3	0	3	0	3	0	3	-14		
1	Makhai Valentine	G	31:05	5-11	3-7	7-8	2	4	6	2	3	20	1	1	0	0	0	0	0	0	-13			
6	Taj Walters	G	36:19	5-13	2-5	1-2	3	7	10	2	1	13	0	1	1	0	1	0	1	0	1	-19		
25	Dylan Ducommun	G	28:38	1-9	0-7	0-0	0	1	1	1	0	2	2	2	1	0	0	0	0	0	-15			
3	Daemar Kelly		27:00	3-10	1-5	1-2	0	7	7	1	3	8	1	2	0	0	2	0	2	0	-15			
7	Hassan Washington		09:34	0-1	0-0	0-2	1	1	2	4	1	0	0	3	0	0	0	0	0	0	0			
2	Carlos Coronado Jr.		02:41	0-0	0-0	0-0	0	0	0	0	0	0	0	1	0	0	0	0	0	0	0			
Team							4	1	5	1		0			2									
Totals				21-59	6-25	11-19	10	28	38	18	17	59	13	14	5	2	8	-18						

Shooting By Period		
1 st FG%	9-29	31.0%
3PT%	3-13	23.1%
FT%	5-8	62.5%
2 nd FG%	12-30	40.0%
3PT%	3-12	25.0%
FT%	6-11	54.5%
GM FG%	21-59	35.6%
3PT%	6-25	24.0%
FT%	11-19	57.9%

Dead Ball Rebounds: 2, 0

Major Fouls: Coach (TF) 2nd 3:35

Eastern Mich. - 77

Record: 9-9 (3-3)

NO.	Name	F	Min	FG			3P			FT			Rebounds			Fouls		TP	AS	TO	ST	Blocks		+/-
				M-A	M-A	M-A	OR	DR	TOT	PF	FD	OR	DR	TOT	BS	BA								
4	Mohammad Habhab	F	36:16	7-15	0-1	1-1	1	9	10	3	2	15	6	2	0	2	0	18						
13	Godslove Nwabude	F	20:09	4-5	0-0	0-2	1	6	7	3	1	8	0	0	0	3	1	0						
2	Carlos Hart	G	33:48	2-6	0-3	5-5	1	3	4	3	6	9	1	3	2	1	0	15						
5	Braelon Green	G	24:02	0-1	0-0	0-0	0	2	2	2	0	0	3	0	1	0	0	19						
9	Addison Patterson	G	26:13	7-13	0-3	6-7	0	5	5	3	4	20	2	2	0	0	1	16						
7	Aidan Rubio		13:04	3-7	2-4	0-0	1	2	3	1	0	8	1	0	0	2	0	7						
10	Jon Sanders		17:20	0-2	0-2	0-0	0	2	2	0	2	0	1	1	1	0	0	2						
35	Merritt Alderink		02:09	0-0	0-0	0-0	0	1	1	0	0	0	0	0	0	0	0	0						
1	Mak Manciel		06:32	0-2	0-1	0-0	0	0	0	0	1	0	1	0	1	0	0	-4						
0	Gregory Lawson		14:20	5-8	3-4	0-0	1	1	2	1	1	13	1	0	0	0	16							
3	Mehki Ellison		06:07	2-2	0-0	0-0	0	1	1	1	0	4	0	1	1	0	1							
Team							0	2	2	0		0			1									
Totals				30-61	5-18	12-15	5	34	39	17	17	77	16	10	6	8	2	18						

Shooting By Period		
1 st FG%	12-31	38.7%
3PT%	2-10	20.0%
FT%	2-2	100%
2 nd FG%	18-30	60.0%
3PT%	3-8	37.5%
FT%	10-13	76.9%
GM FG%	30-61	49.2%
3PT%	5-18	27.8%
FT%	12-15	80.0%

Dead Ball Rebounds: 1, 0

Major Fouls: NONE

	NIU	EMU
Biggest lead	5 (1 st 19:02)	18 (2 nd 0:05)
Best Scoring Run	7 (2 nd 11:28)	8 (2 nd 13:15)
Lead Changes	7	
Times Tied	4	
Time with Lead	17:36	19:43

	NIU	EMU
Points from		
Turnovers	10	16
Paint	30	44
Second Chance	5	5
Fast Breaks	14	17
Bench	8	25

	Period by Period Scoring		
	1st	2nd	TOT
NIU	26	33	59
EMU	28	49	77



Quarter 1

Quarter Starters:

EMU	2 Hart C	4 Habhab M	5 Green B	9 Patterson A	13 Nwabude G
NIU	0 Cobb G	1 Valentine M	6 Walters T	25 Ducommun D	96 Winther G

Game Time	EMU	Score	Diff	NIU
20:00	13 NWABUDE G jumpball lost			96 WINTHER G jumpball won
19:47		0-2	-2	96 WINTHER G 2pt FG in the paint, layup made (2)
19:47				1 VALENTINE M assist (1)
19:23	4 HABHAB M 2pt FG in the paint, jump shot missed			
19:20				0 COBB G defensive rebound (1)
19:19	5 GREEN B foul personal (1 - 1)			0 COBB G foul received (1)
19:02		0-5	-5	1 VALENTINE M 3pt FG , jump shot made (3)
19:02				0 COBB G assist (1)
18:37	4 HABHAB M 2pt FG in the paint, layup made (2)	2-5	-3	
18:12				0 COBB G 2pt FG in the paint, layup blocked
18:12	13 NWABUDE G block (1)			
18:08				offensive rebound (2)
18:04				96 WINTHER G 2pt FG second chance outside the paint, jump shot missed
17:59	13 NWABUDE G defensive rebound (1)			
17:46	2 HART C 3pt FG , jump shot missed			
17:40				96 WINTHER G defensive rebound (1)
17:38				25 DUCOMMUN D 3pt FG , jump shot missed
17:34	13 NWABUDE G defensive rebound (2)			
17:21	13 NWABUDE G 2pt FG in the paint, layup made (2)	4-5	-1	
16:53				0 COBB G 3pt FG , jump shot missed
16:49	13 NWABUDE G defensive rebound (3)			
16:46	2 HART C foul received (1)			0 COBB G foul personal (1 - 1)
16:46				25 DUCOMMUN D substitution out
16:46				3 KELLY D substitution in
16:31	4 HABHAB M 2pt FG in the paint, jump shot missed			
16:28				3 KELLY D defensive rebound (1)
16:20				6 WALTERS T 2pt FG in the paint, jump shot missed
16:17				offensive rebound (5)
16:15				96 WINTHER G 2pt FG second chance in the paint, layup blocked
16:15	2 HART C block (1)			
16:10	13 NWABUDE G defensive rebound (4)			
16:09	9 PATTERSON A 2pt FG fast break in the paint, alley-oop layup made (2)	6-5	1	
16:09	5 GREEN B assist (1)			
15:51				1 VALENTINE M 2pt FG outside the paint, pull up jump shot missed
15:47				1 VALENTINE M offensive rebound (1)
15:46				1 VALENTINE M 2pt FG second chance in the paint, jump shot missed
15:44				1 VALENTINE M offensive rebound (2)
15:43		6-7	-1	1 VALENTINE M 2pt FG second chance in the paint, jump shot made (5)
15:23	9 PATTERSON A 2pt FG in the paint, layup made (4)	8-7	1	



Official Basketball Play by Play - First Half
NIU at Eastern Mich.
 01/13/26 George Gervin GameAbove Center , Ypsilanti
 2025-26 Men's Basketball

Game Time: 6:30 PM
Game Duration: 2:01
Attendance: 1,749

Officials: John Floyd, King Whetstone, Chris Fuller

Game Time	EMU	Score	Diff	NIU
15:06	5 GREEN B foul personal (2 - 2)			96 WINTHER G foul received (1)
15:06	Timeout commercial			
15:06	5 GREEN B substitution out			
15:06	9 PATTERSON A substitution out			
15:06	13 NWABUDE G substitution out			
15:06	7 RUBIO A substitution in			
15:06	10 SANDERS J substitution in			
15:06	35 ALDERINK M substitution in			
15:06				0 COBB G substitution out
15:06				96 WINTHER G substitution out
15:06				7 WASHINGTON H substitution in
15:06				25 DUCOMMUN D substitution in
15:06	Head Coach's Challenge for out of bounds is unsuccessful			
15:06	Timeout short			
14:56				3 KELLY D 2pt FG outside the paint, jump shot missed
14:54				6 WALTERS T offensive rebound (1)
14:53		8-9	-1	6 WALTERS T 2pt FG second chance in the paint, jump shot made (2)
14:23	4 HABHAB M 2pt FG outside the paint, pull up jump shot missed			
14:17				3 KELLY D defensive rebound (2)
14:04				1 VALENTINE M 3pt FG , jump shot missed
14:01	35 ALDERINK M defensive rebound (1)			
13:38	2 HART C 3pt FG , jump shot missed			
13:35				defensive rebound (10)
13:35	2 HART C substitution out			
13:35	1 MANCIEL M substitution in			
13:35				1 VALENTINE M substitution out
13:35				0 COBB G substitution in
13:35	35 ALDERINK M substitution out			
13:35	13 NWABUDE G substitution in			
13:19	1 MANCIEL M foul received (1)			7 WASHINGTON H foul offensive (1 - 2)
13:19				7 WASHINGTON H turnover offensive (1)
12:58	7 RUBIO A 3pt FG from turnover, jump shot missed			
12:54				3 KELLY D defensive rebound (3)
12:51		8-12	-4	6 WALTERS T 3pt FG fast break, jump shot made (5)
12:51				25 DUCOMMUN D assist (1)
12:32	10 SANDERS J 3pt FG , jump shot missed			
12:27				3 KELLY D defensive rebound (4)
12:22				6 WALTERS T 3pt FG , jump shot missed
12:18	10 SANDERS J defensive rebound (1)			
12:00	Timeout commercial			
12:00	7 RUBIO A substitution out			
12:00	13 NWABUDE G substitution out			
12:00	2 HART C substitution in			
12:00	9 PATTERSON A substitution in			
11:47	turnover shot clock (1)			
11:36	1 MANCIEL M substitution out			
11:36	0 LAWSON G substitution in			
11:30				25 DUCOMMUN D 3pt FG from turnover, jump shot missed



NIU at Eastern Mich.

01/13/26 George Gervin GameAbove Center , Ypsilanti
2025-26 Men's Basketball

Game Time: 6:30 PM
Game Duration: 2:01
Attendance: 1,749

Officials: John Floyd, King Whetstone, Chris Fuller

Game Time	EMU	Score	Diff	NIU
11:29	2 HART C defensive rebound (1)			
11:29	2 HART C foul received (2)			7 WASHINGTON H foul personal (2 - 3)
11:29				7 WASHINGTON H substitution out
11:29				96 WINTHER G substitution in
11:07	0 LAWSON G 2pt FG outside the paint, pull up jump shot made (2)	10-12	-2	
10:42		10-14	-4	0 COBB G 2pt FG in the paint, layup made (2)
10:29	0 LAWSON G 3pt FG , jump shot made (5)	13-14	-1	
10:29	10 SANDERS J assist (1)			
10:03		13-16	-3	6 WALTERS T 2pt FG in the paint, layup made (7)
09:49	10 SANDERS J substitution out			
09:49	3 ELLISON M substitution in			
09:37	2 HART C foul received (3)			96 WINTHER G foul shooting (1 - 4)
09:37	2 HART C free throw 1 - 2 made (1)	14-16	-2	
09:37	4 HABHAB M substitution out			
09:37	13 NWABUDE G substitution in			
09:37	2 HART C free throw 2 - 2 made (2)	15-16	-1	
09:12				3 KELLY D 3pt FG , jump shot missed
09:07	13 NWABUDE G defensive rebound (5)			
09:00	9 PATTERSON A 2pt FG outside the paint, pull up jump shot missed			
08:55				6 WALTERS T defensive rebound (2)
08:51				25 DUCOMMUN D 3pt FG , jump shot missed
08:48				6 WALTERS T offensive rebound (3)
08:47				6 WALTERS T 2pt FG second chance in the paint, jump shot missed
08:44	0 LAWSON G defensive rebound (1)			
08:40	0 LAWSON G 3pt FG , jump shot missed			
08:38				0 COBB G defensive rebound (2)
08:38	3 ELLISON M foul personal (1 - 3)			0 COBB G foul received (2)
08:24				25 DUCOMMUN D 3pt FG , jump shot missed
08:19	3 ELLISON M defensive rebound (1)			
08:02	0 LAWSON G 2pt FG in the paint, pull up jump shot missed			
07:58	0 LAWSON G offensive rebound (2)			
07:57	9 PATTERSON A foul offensive (1 - 4)			3 KELLY D foul received (1)
07:57	9 PATTERSON A turnover offensive (1)			
07:57	Timeout commercial			
07:57	9 PATTERSON A substitution out			
07:57	4 HABHAB M substitution in			
07:57				3 KELLY D substitution out
07:57				25 DUCOMMUN D substitution out
07:57				1 VALENTINE M substitution in
07:57				2 CORONADO JR. C substitution in
07:42	0 LAWSON G foul shooting (1 - 5)			1 VALENTINE M foul received (1)
07:42		15-17	-2	1 VALENTINE M free throw 1 - 3 made (6)
07:42		15-18	-3	1 VALENTINE M free throw 2 - 3 made (7)
07:42	0 LAWSON G substitution out			
07:42	1 MANCIEL M substitution in			
07:42				6 WALTERS T substitution out
07:42				3 KELLY D substitution in



NIU at Eastern Mich.

01/13/26 George Gervin GameAbove Center , Ypsilanti
2025-26 Men's Basketball

Game Time: 6:30 PM
Game Duration: 2:01
Attendance: 1,749

Officials: John Floyd, King Whetstone, Chris Fuller

Game Time	EMU	Score	Diff	NIU
07:42		15-19	-4	1 VALENTINE M free throw 3 - 3 made (8)
07:17	3 ELLISON M 2pt FG in the paint, floating jump shot made (2)	17-19	-2	
06:53	1 MANCIEL M steal (1)			2 CORONADO JR. C turnover lost ball (out of bounds) (1)
06:47	4 HABHAB M 2pt FG fast break from turnover in the paint, dunk, made (4)	19-19	0	
06:47	1 MANCIEL M assist (1)			
06:34		19-21	-2	3 KELLY D 2pt FG in the paint, layup made (2)
06:34				96 WINTHER G assist (1)
06:16	13 NWABUDE G 2pt FG in the paint, jump shot blocked			
06:16				96 WINTHER G block (1)
06:11				96 WINTHER G defensive rebound (2)
06:10		19-24	-5	1 VALENTINE M 3pt FG fast break, jump shot made (11)
06:10				0 COBB G assist (2)
05:43	2 HART C foul received (4)			1 VALENTINE M foul personal (1 - 5)
05:43	13 NWABUDE G substitution out			
05:43	9 PATTERSON A substitution in			
05:43				2 CORONADO JR. C substitution out
05:43				25 DUCOMMUN D substitution in
05:31	9 PATTERSON A 3pt FG , jump shot missed			
05:27				0 COBB G defensive rebound (3)
05:18				3 KELLY D 3pt FG , jump shot missed
05:15	9 PATTERSON A defensive rebound (1)			
05:04	9 PATTERSON A 2pt FG in the paint, layup blocked			
05:04				96 WINTHER G block (2)
04:59				1 VALENTINE M defensive rebound (3)
04:58				3 KELLY D turnover out of bounds (1)
04:58	3 ELLISON M substitution out			
04:58	10 SANDERS J substitution in			
04:39	9 PATTERSON A 2pt FG from turnover in the paint, layup made (6)	21-24	-3	
04:39	4 HABHAB M assist (1)			
04:25	2 HART C foul shooting (1 - 6)			96 WINTHER G foul received (2)
04:25		21-25	-4	96 WINTHER G free throw 1 - 2 made (3)
04:25				96 WINTHER G free throw 2 - 2 missed
04:23	4 HABHAB M defensive rebound (1)			
04:09	1 MANCIEL M 3pt FG , jump shot missed			
04:05				3 KELLY D defensive rebound (5)
04:01	4 HABHAB M foul personal (1 - 7)			96 WINTHER G foul received (3)
04:01				3 KELLY D substitution out
04:01				6 WALTERS T substitution in
04:01				96 WINTHER G 1&1 free throw 1 missed
04:00	9 PATTERSON A defensive rebound (2)			
03:47	10 SANDERS J 3pt FG , jump shot missed			
03:43				96 WINTHER G defensive rebound (3)
03:36				1 VALENTINE M turnover out of bounds (1)
03:36	Timeout commercial			
03:19	10 SANDERS J foul received (1)			0 COBB G foul personal (2 - 6)
03:19				0 COBB G substitution out
03:19				3 KELLY D substitution in



NIU at Eastern Mich.

01/13/26 George Gervin GameAbove Center , Ypsilanti
2025-26 Men's Basketball

Game Time: 6:30 PM
Game Duration: 2:01
Attendance: 1,749

Officials: John Floyd, King Whetstone, Chris Fuller

Game Time	EMU	Score	Diff	NIU
03:11	1 MANCIEL M 2pt FG from turnover outside the paint, floating jump shot missed			
03:09				6 WALTERS T defensive rebound (4)
03:09	9 PATTERSON A foul personal (2 - 8)			6 WALTERS T foul received (1)
03:09	1 MANCIEL M substitution out			
03:09	2 HART C substitution out			
03:09	5 GREEN B substitution in			
03:09	13 NWABUDE G substitution in			
03:09		21-26	-5	6 WALTERS T 1&1 free throw 1 made (8)
03:09	9 PATTERSON A substitution out			
03:09	7 RUBIO A substitution in			
03:09				6 WALTERS T 1&1 free throw 2 missed
03:08	4 HABHAB M defensive rebound (2)			
02:53	13 NWABUDE G 2pt FG in the paint, turnaround jump shot made (4)	23-26	-3	
02:53	4 HABHAB M assist (2)			
02:29				3 KELLY D 2pt FG in the paint, jump shot missed
02:26	7 RUBIO A defensive rebound (1)			
02:01	4 HABHAB M 2pt FG in the paint, turnaround jump shot missed			
01:57				6 WALTERS T defensive rebound (5)
01:54	10 SANDERS J steal (1)			25 DUCOMMUN D turnover bad pass (1)
01:34	4 HABHAB M 2pt FG from turnover in the paint, jump shot missed			
01:31	4 HABHAB M offensive rebound (3)			
01:30	13 NWABUDE G substitution out			
01:30	2 HART C substitution in			
01:27	7 RUBIO A 3pt FG from turnover second chance, jump shot made (3)	26-26	0	
01:27	5 GREEN B assist (2)			
01:17				6 WALTERS T 3pt FG , jump shot missed
01:06	10 SANDERS J defensive rebound (2)			
01:06	jump ball situation			
00:56	4 HABHAB M 2pt FG in the paint, alley-oop layup made (6)	28-26	2	
00:56	5 GREEN B assist (3)			
00:29				96 WINTHER G 2pt FG in the paint, layup blocked
00:29	4 HABHAB M block (1)			
00:29	defensive rebound (19)			
00:29	5 GREEN B substitution out			
00:29	0 LAWSON G substitution in			
00:29				96 WINTHER G substitution out
00:29				7 WASHINGTON H substitution in
00:29				1 VALENTINE M substitution out
00:29				0 COBB G substitution in
00:02	0 LAWSON G 2pt FG outside the paint, pull up jump shot missed			
00:00				3 KELLY D defensive rebound (6)
END OF PERIOD				
EMU 28-26 NIU				



NIU at Eastern Mich.

01/13/26 George Gervin GameAbove Center , Ypsilanti
2025-26 Men's Basketball

Game Time: 6:30 PM
Game Duration: 2:01
Attendance: 1,749

Officials: John Floyd, King Whetstone, Chris Fuller

NIU - 26

NO.	Name	F/G	Min	FG	3P	FT	Rebounds			Fouls		TP	AS	TO	ST	Blocks		+/-
							M-A	M-A	M-A	OR	DR					TOT	PF	
96	Gustav Winther	F	15:54	1-4	0-0	1-3	0	3	3	1	3	3	1	0	0	2	2	-7
0	Gianni Cobb	G	15:39	1-3	0-1	0-0	0	3	3	2	2	2	2	0	0	0	1	2
1	Makhai Valentine	G	13:53	3-6	2-3	3-3	2	1	3	1	1	11	1	1	0	0	0	-2
6	Taj Walters	G	16:19	3-7	1-3	1-2	2	3	5	0	1	8	0	0	0	0	0	-3
25	Dylan Ducommun	G	16:06	0-4	0-4	0-0	0	0	0	0	0	0	1	1	0	0	0	-4
3	Daemar Kelly		15:49	1-5	0-2	0-0	0	6	6	0	1	2	0	1	0	0	0	-5
7	Hassan Washington		04:06	0-0	0-0	0-0	0	0	0	2	0	0	0	1	0	0	0	5
2	Carlos Coronado Jr.		02:14	0-0	0-0	0-0	0	0	0	0	0	0	0	1	0	0	0	4
Team							2	1	3	0		0		0				
Totals				9-29	3-13	5-8	6	17	23	6	8	26	5	5	0	2	3	-2

Shooting By Period		
1st FG%	9-29	31.0%
3PT%	3-13	23.1%
FT%	5-8	62.5%
GM FG%	9-29	31.0%
3PT%	3-13	23.1%
FT%	5-8	62.5%

Dead Ball Rebounds: 0, 0

Major Fouls: NONE

Eastern Mich. - 28

NO.	Name	F/G	Min	FG	3P	FT	Rebounds			Fouls		TP	AS	TO	ST	Blocks		+/-
							M-A	M-A	M-A	OR	DR					TOT	PF	
4	Mohammad Habhab	F	18:20	3-8	0-0	0-0	1	2	3	1	0	6	2	0	0	1	0	1
13	Godslove Nwabude	F	12:02	2-3	0-0	0-0	0	5	5	0	0	4	0	0	0	1	1	-4
2	Carlos Hart	G	16:46	0-2	0-2	2-2	0	1	1	1	4	2	0	0	0	1	0	4
5	Braelon Green	G	07:34	0-0	0-0	0-0	0	0	0	2	0	0	3	0	0	0	0	7
9	Addison Patterson	G	11:31	3-6	0-1	0-0	0	2	2	2	0	6	0	1	0	0	1	4
7	Aidan Rubio		06:15	1-2	1-2	0-0	0	1	1	0	0	3	0	0	0	0	0	2
10	Jon Sanders		10:15	0-2	0-2	0-0	0	2	2	0	1	0	1	0	1	0	0	3
35	Merritt Alderink		01:31	0-0	0-0	0-0	0	1	1	0	0	0	0	0	0	0	0	-2
1	Mak Manciel		06:32	0-2	0-1	0-0	0	0	0	0	1	0	1	0	1	0	0	-4
0	Gregory Lawson		04:23	2-5	1-2	0-0	1	1	2	1	0	5	0	0	0	0	0	1
3	Mehki Ellison		04:51	1-1	0-0	0-0	0	1	1	1	0	2	0	0	0	0	0	-2
Team							0	1	1	0		0		1				
Totals				12-31	2-10	2-2	2	17	19	8	6	28	7	2	2	3	2	2

Shooting By Period		
1st FG%	12-31	38.7%
3PT%	2-10	20.0%
FT%	2-2	100%
GM FG%	12-31	38.7%
3PT%	2-10	20.0%
FT%	2-2	100.0%

Dead Ball Rebounds: 0, 0

Major Fouls: NONE

	NIU	EMU
Biggest lead	5 (1 st 19:02)	2 (1 st 0:56)
Best Scoring Run	5 (1 st 19:02)	7 (1 st 0:56)
Lead Changes	5	
Times Tied	2	
Time with Lead	17:11	01:53

	NIU	EMU
Points from		
Turnovers	3	7
Paint	12	18
Second Chance	4	3
Fast Breaks	7	4
Bench	2	10

Period by Period Scoring			
	1st	2nd	TOT
NIU	26	33	59
EMU	28	49	77



Officials: John Floyd, King Whetstone, Chris Fuller

Quarter 2

Quarter Starters:

EMU	2 Hart C	4 Habhab M	5 Green B	9 Patterson A	13 Nwabude G
NIU	0 Cobb G	1 Valentine M	6 Walters T	25 Ducommun D	96 Winther G

Game Time	EMU	Score	Diff	NIU
20:00	0 LAWSON G substitution out			
20:00	7 RUBIO A substitution out			
20:00	10 SANDERS J substitution out			
20:00	5 GREEN B substitution in			
20:00	9 PATTERSON A substitution in			
20:00	13 NWABUDE G substitution in			
20:00				3 KELLY D substitution out
20:00				7 WASHINGTON H substitution out
20:00				1 VALENTINE M substitution in
20:00				96 WINTHER G substitution in
19:37		28-28	0	0 COBB G 2pt FG in the paint, layup made (4)
19:15				Head Coach's Challenge for out of bounds is successful
19:15	4 HABHAB M turnover out of bounds (1)			
19:01	13 NWABUDE G foul personal (1 - 1)			0 COBB G foul received (3)
18:55	13 NWABUDE G foul shooting (2 - 2)			1 VALENTINE M foul received (2)
18:54		28-29	-1	1 VALENTINE M free throw 1 - 3 made (12)
18:54		28-30	-2	1 VALENTINE M free throw 2 - 3 made (13)
18:54		28-31	-3	1 VALENTINE M free throw 3 - 3 made (14)
18:29	2 HART C 2pt FG in the paint, layup made (4)	30-31	-1	
18:29	4 HABHAB M assist (3)			
18:29	2 HART C foul received (5)			96 WINTHER G foul shooting (2 - 1)
18:29	2 HART C free throw 1 - 1 made (5)	31-31	0	
18:09				6 WALTERS T 3pt FG , jump shot missed
18:02	9 PATTERSON A defensive rebound (3)			
17:54	2 HART C turnover bad pass (1)			6 WALTERS T steal (1)
17:44				25 DUCOMMUN D 3pt FG from turnover, jump shot missed
17:41	4 HABHAB M defensive rebound (4)			
17:27	13 NWABUDE G 2pt FG in the paint, layup made (6)	33-31	2	
17:27	4 HABHAB M assist (4)			
16:56	5 GREEN B steal (1)			0 COBB G turnover bad pass (1)
16:45	13 NWABUDE G 2pt FG from turnover in the paint, layup made (8)	35-31	4	
16:45	9 PATTERSON A assist (1)			
16:23		35-34	1	1 VALENTINE M 3pt FG , jump shot made (17)
16:23				25 DUCOMMUN D assist (2)
15:48	9 PATTERSON A 2pt FG in the paint, pull up jump shot made (8)	37-34	3	
15:37	2 HART C steal (1)			6 WALTERS T turnover bad pass (1)
15:22	4 HABHAB M 2pt FG from turnover in the paint, pull up jump shot made (8)	39-34	5	
15:22	2 HART C assist (1)			
15:06	2 HART C steal (2)			25 DUCOMMUN D turnover bad pass (2)
15:01	2 HART C 2pt FG from turnover in the paint, layup missed			
14:59				1 VALENTINE M defensive rebound (4)
14:53				1 VALENTINE M 3pt FG , jump shot missed



Official Basketball Play by Play - Second Half
NIU at Eastern Mich.
 01/13/26 George Gervin GameAbove Center , Ypsilanti
 2025-26 Men's Basketball

Game Time: 6:30 PM
Game Duration: 2:01
Attendance: 1,749

Officials: John Floyd, King Whetstone, Chris Fuller

Game Time	EMU	Score	Diff	NIU
14:50	4 HABHAB M defensive rebound (5)			
14:46	9 PATTERSON A foul received (1)			1 VALENTINE M foul personal (2 - 2)
14:46	Timeout commercial			
14:46	13 NWABUDE G substitution out			
14:46	10 SANDERS J substitution in			
14:46				1 VALENTINE M substitution out
14:46				96 WINTHER G substitution out
14:46				3 KELLY D substitution in
14:46				7 WASHINGTON H substitution in
14:38	9 PATTERSON A 2pt FG in the paint, layup made (10)	41-34	7	
14:38	4 HABHAB M assist (5)			
14:22				25 DUCOMMUN D 3pt FG , jump shot missed
14:10				7 WASHINGTON H offensive rebound (1)
14:10				7 WASHINGTON H 2pt FG second chance in the paint, tip-in layup missed
14:09	2 HART C defensive rebound (2)			
14:08	9 PATTERSON A 2pt FG in the paint, layup missed			
14:04				7 WASHINGTON H defensive rebound (2)
14:00				0 COBB G 2pt FG in the paint, jump shot blocked
14:00	4 HABHAB M block (2)			
14:00	4 HABHAB M defensive rebound (6)			
13:55	2 HART C 3pt FG , jump shot missed			
13:46	2 HART C offensive rebound (3)			
13:40	4 HABHAB M 3pt FG second chance, jump shot missed			
13:40				6 WALTERS T defensive rebound (6)
13:40	9 PATTERSON A foul shooting (3 - 3)			7 WASHINGTON H foul received (1)
13:40				7 WASHINGTON H free throw 1 - 2 missed
13:40				offensive dead ball rebound (1)
13:40	4 HABHAB M substitution out			
13:40	9 PATTERSON A substitution out			
13:40	7 RUBIO A substitution in			
13:40	13 NWABUDE G substitution in			
13:40				0 COBB G substitution out
13:40				1 VALENTINE M substitution in
13:40				7 WASHINGTON H free throw 2 - 2 missed
13:39	13 NWABUDE G defensive rebound (6)			
13:34				7 WASHINGTON H substitution out
13:34				96 WINTHER G substitution in
13:34				25 DUCOMMUN D substitution out
13:34				0 COBB G substitution in
13:25	7 RUBIO A 2pt FG in the paint, jump shot missed			
13:22	7 RUBIO A offensive rebound (2)			
13:15	2 HART C 2pt FG second chance in the paint, layup made (7)	43-34	9	
13:03		43-36	7	3 KELLY D 2pt FG in the paint, layup made (4)
13:03				0 COBB G assist (3)
12:35	5 GREEN B 2pt FG in the paint, turnaround jump shot missed			
12:31				3 KELLY D defensive rebound (7)
12:13		43-39	4	3 KELLY D 3pt FG , jump shot made (7)
11:51	7 RUBIO A 2pt FG in the paint, layup missed			



Official Basketball Play by Play - Second Half
NIU at Eastern Mich.
 01/13/26 George Gervin GameAbove Center , Ypsilanti
 2025-26 Men's Basketball

Game Time: 6:30 PM
Game Duration: 2:01
Attendance: 1,749

Officials: John Floyd, King Whetstone, Chris Fuller

Game Time	EMU	Score	Diff	NIU
11:49	13 NWABUDE G offensive rebound (7)			
11:49	13 NWABUDE G foul received (1)			96 WINTHER G foul shooting (3 - 3)
11:49	Timeout commercial			
11:49	2 HART C substitution out			
11:49	5 GREEN B substitution out			
11:49	0 LAWSON G substitution in			
11:49	9 PATTERSON A substitution in			
11:49				96 WINTHER G substitution out
11:49				7 WASHINGTON H substitution in
11:49	13 NWABUDE G free throw 1 - 2 missed			
11:49	offensive dead ball rebound (1)			
11:49	13 NWABUDE G free throw 2 - 2 missed			
11:48				6 WALTERS T defensive rebound (7)
11:36	13 NWABUDE G foul personal (3 - 4)			3 KELLY D foul received (2)
11:36	13 NWABUDE G substitution out			
11:36	4 HABHAB M substitution in			
11:28		43-41	2	6 WALTERS T 2pt FG in the paint, jump shot made (10)
11:14	7 RUBIO A 3pt FG , jump shot made (6)	46-41	5	
11:14	0 LAWSON G assist (1)			
10:57	10 SANDERS J foul received (2)			7 WASHINGTON H foul offensive (3 - 4)
10:57				7 WASHINGTON H turnover offensive (2)
10:54	10 SANDERS J turnover lost ball (out of bounds) (1)			0 COBB G steal (1)
10:46		46-43	3	0 COBB G 2pt FG fast break from turnover in the paint, layup made (6)
10:36	7 RUBIO A 2pt FG in the paint, dunk, made (8)	48-43	5	
10:36	9 PATTERSON A assist (2)			
10:26				3 KELLY D 3pt FG , jump shot blocked
10:26	7 RUBIO A block (1)			
10:22	9 PATTERSON A defensive rebound (4)			
10:20	9 PATTERSON A turnover bad pass (2)			0 COBB G steal (2)
10:18	4 HABHAB M foul personal (2 - 5)			0 COBB G foul received (4)
10:18	9 PATTERSON A substitution out			
10:18	2 HART C substitution in			
10:18				3 KELLY D substitution out
10:18				25 DUCOMMUN D substitution in
10:12				1 VALENTINE M 3pt FG from turnover, jump shot missed
10:08	4 HABHAB M defensive rebound (7)			
09:50	2 HART C foul offensive (2 - 6)			0 COBB G foul received (5)
09:50	2 HART C turnover offensive (2)			
09:33				0 COBB G 2pt FG from turnover in the paint, layup blocked
09:33	7 RUBIO A block (2)			
09:30				offensive rebound (30)
09:33	10 SANDERS J substitution out			
09:33	5 GREEN B substitution in			
09:20				turnover shot clock (10)
09:03	2 HART C turnover bad pass (3)			25 DUCOMMUN D steal (1)
08:56				6 WALTERS T 2pt FG from turnover in the paint, layup missed
08:53	4 HABHAB M defensive rebound (8)			
08:51	7 RUBIO A 3pt FG , jump shot missed			



Official Basketball Play by Play - Second Half
NIU at Eastern Mich.
 01/13/26 George Gervin GameAbove Center , Ypsilanti
 2025-26 Men's Basketball

Game Time: 6:30 PM
Game Duration: 2:01
Attendance: 1,749

Officials: John Floyd, King Whetstone, Chris Fuller

Game Time	EMU	Score	Diff	NIU
08:47				6 WALTERS T defensive rebound (8)
08:24				25 DUCOMMUN D 2pt FG in the paint, jump shot missed
08:20	7 RUBIO A defensive rebound (3)			
08:17	0 LAWSON G 3pt FG fast break, jump shot made (8)	51-43	8	
08:17	7 RUBIO A assist (1)			
07:48	0 LAWSON G foul received (1)			7 WASHINGTON H foul offensive (4 - 5)
07:48				7 WASHINGTON H turnover offensive (3)
07:48	Timeout commercial			
07:48				7 WASHINGTON H substitution out
07:48				25 DUCOMMUN D substitution out
07:48				3 KELLY D substitution in
07:48				96 WINTHER G substitution in
07:36	0 LAWSON G 3pt FG from turnover, jump shot made (11)	54-43	11	
07:36	4 HABHAB M assist (6)			
07:11	7 RUBIO A foul shooting (1 - 7)			3 KELLY D foul received (3)
07:11		54-44	10	3 KELLY D free throw 1 - 2 made (8)
07:11	7 RUBIO A substitution out			
07:11	9 PATTERSON A substitution in			
07:11				3 KELLY D free throw 2 - 2 missed
07:11	4 HABHAB M defensive rebound (9)			
07:11	4 HABHAB M foul received (1)			96 WINTHER G foul personal (4 - 6)
06:52	4 HABHAB M 2pt FG in the paint, turnaround jump shot made (10)	56-44	12	
06:38				3 KELLY D 3pt FG , jump shot missed
06:32	5 GREEN B defensive rebound (1)			
06:23				3 KELLY D substitution out
06:23				25 DUCOMMUN D substitution in
06:18	4 HABHAB M 2pt FG in the paint, jump shot missed			
06:16				1 VALENTINE M defensive rebound (5)
06:08				1 VALENTINE M 3pt FG , jump shot missed
06:04	2 HART C defensive rebound (4)			
05:50	4 HABHAB M turnover lost ball (out of bounds) (2)			0 COBB G steal (3)
05:33	0 LAWSON G substitution out			
05:33	10 SANDERS J substitution in			
05:33				25 DUCOMMUN D substitution out
05:33				3 KELLY D substitution in
05:31				turnover (12)
05:22	9 PATTERSON A 3pt FG from turnover, jump shot missed			
05:19				1 VALENTINE M defensive rebound (6)
05:15		56-47	9	6 WALTERS T 3pt FG fast break, jump shot made (13)
05:15				0 COBB G assist (4)
04:51	4 HABHAB M 2pt FG outside the paint, turnaround jump shot made (12)	58-47	11	
04:35		58-49	9	0 COBB G 2pt FG in the paint, layup made (8)
04:35				96 WINTHER G assist (2)
04:24	2 HART C foul received (6)			6 WALTERS T foul shooting (1 - 7)
04:24	2 HART C free throw 1 - 2 made (8)	59-49	10	
04:24	2 HART C free throw 2 - 2 made (9)	60-49	11	
04:24	2 HART C substitution out			
04:24	13 NWABUDE G substitution in			



Official Basketball Play by Play - Second Half
NIU at Eastern Mich.
 01/13/26 George Gervin GameAbove Center , Ypsilanti
 2025-26 Men's Basketball

Game Time: 6:30 PM
Game Duration: 2:01
Attendance: 1,749

Officials: John Floyd, King Whetstone, Chris Fuller

Game Time	EMU	Score	Diff	NIU
04:09		60-51	9	96 WINTHER G 2pt FG in the paint, layup made (5)
04:09				0 COBB G assist (5)
03:51	9 PATTERSON A 2pt FG in the paint, layup made (12)	62-51	11	
03:41				3 KELLY D 2pt FG in the paint, layup blocked
03:41	13 NWABUDE G block (2)			
03:41				offensive rebound (34)
03:41	Timeout commercial			
03:41	10 SANDERS J substitution out			
03:41	0 LAWSON G substitution in			
03:39				6 WALTERS T 2pt FG second chance in the paint, jump shot blocked
03:39	13 NWABUDE G block (3)			
03:35	5 GREEN B defensive rebound (2)			
03:35				foul coach class A technical (8)
03:35	9 PATTERSON A free throw fast break 1 - 2 made (13)	63-51	12	
03:35	9 PATTERSON A free throw fast break 2 - 2 made (14)	64-51	13	
03:35	13 NWABUDE G substitution out			
03:35	2 HART C substitution in			
03:13	0 LAWSON G 2pt FG outside the paint, pull up jump shot made (13)	66-51	15	
02:52				0 COBB G turnover out of bounds (2)
02:52				1 VALENTINE M substitution out
02:52				25 DUCOMMUN D substitution in
02:41	4 HABHAB M 2pt FG from turnover in the paint, layup missed			
02:39				6 WALTERS T defensive rebound (9)
02:34		66-53	13	25 DUCOMMUN D 2pt FG fast break in the paint, layup made (2)
02:34				0 COBB G assist (6)
02:28	9 PATTERSON A 2pt FG fast break in the paint, layup made (16)	68-53	15	
02:28	9 PATTERSON A foul received (2)			6 WALTERS T foul shooting (2 - 9)
02:28	9 PATTERSON A free throw fast break 1 - 1 missed			
02:26				96 WINTHER G defensive rebound (4)
02:18		68-55	13	96 WINTHER G 2pt FG in the paint, layup made (7)
02:18				3 KELLY D assist (1)
01:46	9 PATTERSON A 3pt FG , jump shot missed			
01:42				25 DUCOMMUN D defensive rebound (1)
01:37				25 DUCOMMUN D 3pt FG , jump shot missed
01:33	9 PATTERSON A defensive rebound (5)			
01:31	9 PATTERSON A foul received (3)			25 DUCOMMUN D foul personal (1 - 10)
01:31	4 HABHAB M substitution out			
01:31	13 NWABUDE G substitution in			
01:31	9 PATTERSON A free throw fast break 1 - 2 made (17)	69-55	14	
01:31				3 KELLY D substitution out
01:31				1 VALENTINE M substitution in
01:31	9 PATTERSON A free throw fast break 2 - 2 made (18)	70-55	15	
01:31	Timeout short			
01:31	13 NWABUDE G substitution out			
01:31	4 HABHAB M substitution in			
01:31				96 WINTHER G substitution out
01:31				7 WASHINGTON H substitution in



Official Basketball Play by Play - Second Half
NIU at Eastern Mich.
 01/13/26 George Gervin GameAbove Center , Ypsilanti
 2025-26 Men's Basketball

Game Time: 6:30 PM
Game Duration: 2:01
Attendance: 1,749

Officials: John Floyd, King Whetstone, Chris Fuller

Game Time	EMU	Score	Diff	NIU
01:16	4 HABHAB M foul shooting (3 - 8)			1 VALENTINE M foul received (3)
01:16				1 VALENTINE M free throw 1 - 2 missed
01:16				offensive dead ball rebound (2)
01:16	5 GREEN B substitution out			
01:16	3 ELLISON M substitution in			
01:16		70-56	14	1 VALENTINE M free throw 2 - 2 made (18)
01:16				7 WASHINGTON H substitution out
01:16				3 KELLY D substitution in
00:52	4 HABHAB M 2pt FG in the paint, layup made (14)	72-56	16	
00:52	4 HABHAB M foul received (2)			3 KELLY D foul shooting (1 - 11)
00:52	4 HABHAB M free throw 1 - 1 made (15)	73-56	17	
00:43				6 WALTERS T 2pt FG in the paint, layup missed
00:40				6 WALTERS T offensive rebound (10)
00:37	2 HART C foul personal (3 - 9)			0 COBB G foul received (6)
00:37		73-57	16	0 COBB G 1&1 free throw 1 made (9)
00:37	2 HART C substitution out			
00:37	35 ALDERINK M substitution in			
00:37				0 COBB G 1&1 free throw 2 missed
00:37	defensive rebound (38)			
00:37				25 DUCOMMUN D substitution out
00:37				2 CORONADO JR. C substitution in
00:31	3 ELLISON M turnover dribbling violation (1)			
00:31				2 CORONADO JR. C substitution out
00:31				25 DUCOMMUN D substitution in
00:23		73-59	14	1 VALENTINE M 2pt FG from turnover in the paint, dunk, made (20)
00:23				0 COBB G assist (7)
00:20				1 VALENTINE M substitution out
00:20				2 CORONADO JR. C substitution in
00:19	9 PATTERSON A foul received (4)			0 COBB G foul personal (3 - 12)
00:19	9 PATTERSON A free throw fast break 1 - 2 made (19)	74-59	15	
00:19	9 PATTERSON A free throw fast break 2 - 2 made (20)	75-59	16	
00:19	9 PATTERSON A substitution out			
00:19	7 RUBIO A substitution in			
00:11	3 ELLISON M steal (1)			3 KELLY D turnover bad pass (2)
00:05	3 ELLISON M 2pt FG fast break from turnover in the paint, layup made (4)	77-59	18	
00:03				0 COBB G 2pt FG in the paint, floating jump shot missed
00:00	4 HABHAB M defensive rebound (10)			
END OF GAME				
EMU 77-59 NIU				



Officials: John Floyd, King Whetstone, Chris Fuller

NIU - 33

NO.	Name	F	Min	FG	3P	FT	Rebounds			Fouls		TP	AS	TO	ST	Blocks		+/-
				M-A	M-A	M-A	OR	DR	TOT	PF	FD					BS	BA	
96	Gustav Winther	F	13:16	2-2	0-0	0-0	0	1	1	3	0	4	1	0	0	0	0	-7
0	Gianni Cobb	G	19:54	3-6	0-0	1-2	0	0	0	1	4	7	5	2	3	0	2	-16
1	Makhai Valentine	G	17:12	2-5	1-4	4-5	0	3	3	1	2	9	0	0	0	0	-11	
6	Taj Walters	G	20:00	2-6	1-2	0-0	1	4	5	2	0	5	0	1	1	0	1	-16
25	Dylan Ducommun	G	12:32	1-5	0-3	0-0	0	1	1	1	0	2	1	1	1	0	0	-11
3	Daemar Kelly		11:11	2-5	1-3	1-2	0	1	1	1	2	6	1	1	0	0	2	-10
7	Hassan Washington		05:28	0-1	0-0	0-2	1	1	2	2	1	0	0	2	0	0	0	-5
2	Carlos Coronado Jr.		00:27	0-0	0-0	0-0	0	0	0	0	0	0	0	0	0	0	0	-4
Team							2	0	2	1		0		2				
Totals				12-30	3-12	6-11	4	11	15	12	9	33	8	9	5	0	5	-16

Shooting By Period		
2 nd FG%	12-30	40.0%
3PT%	3-12	25.0%
FT%	6-11	54.5%
GM FG%	12-30	40.0%
3PT%	3-12	25.0%
FT%	6-11	54.5%

Dead Ball Rebounds: 2, 0

Major Fouls: Coach (TF) 2nd 3:35

Eastern Mich. - 49

NO.	Name	F	Min	FG	3P	FT	Rebounds			Fouls		TP	AS	TO	ST	Blocks		+/-
				M-A	M-A	M-A	OR	DR	TOT	PF	FD					BS	BA	
4	Mohammad Habhab	F	17:56	4-7	0-1	1-1	0	7	7	2	2	9	4	2	0	1	0	17
13	Godslove Nwabude	F	08:07	2-2	0-0	0-2	1	1	2	3	1	4	0	0	0	2	0	4
2	Carlos Hart	G	17:02	2-4	0-1	3-3	1	2	3	2	2	7	1	3	2	0	0	11
5	Braelon Green	G	16:28	0-1	0-0	0-0	0	2	2	0	0	0	0	0	1	0	0	12
9	Addison Patterson	G	14:42	4-7	0-2	6-7	0	3	3	1	4	14	2	1	0	0	0	12
10	Jon Sanders		07:05	0-0	0-0	0-0	0	0	0	0	1	0	0	1	0	0	0	-1
7	Aidan Rubio		06:49	2-5	1-2	0-0	1	1	2	1	0	5	1	0	0	2	0	5
0	Gregory Lawson		09:57	3-3	2-2	0-0	0	0	0	0	1	8	1	0	0	0	0	15
3	Mehki Ellison		01:16	1-1	0-0	0-0	0	0	0	0	0	2	0	1	1	0	0	3
35	Merritt Alderink		00:38	0-0	0-0	0-0	0	0	0	0	0	0	0	0	0	0	0	2
Team							0	1	1	0		0		0				
Totals				18-30	3-8	10-13	3	17	20	9	11	49	9	8	4	5	0	16

Shooting By Period		
2 nd FG%	18-30	60.0%
3PT%	3-8	37.5%
FT%	10-13	76.9%
GM FG%	18-30	60.0%
3PT%	3-8	37.5%
FT%	10-13	76.9%

Dead Ball Rebounds: 1, 0

Major Fouls: NONE

	NIU	EMU
Biggest lead	3 (2 nd 18:54)	18 (2 nd 0:05)
Best Scoring Run	7 (2 nd 11:28)	8 (2 nd 13:15)
Lead Changes	2	
Times Tied	2	
Time with Lead	00:25	17:27

	NIU	EMU
Points from		
Turnovers	7	9
Paint	18	26
Second Chance	1	2
Fast Breaks	7	13
Bench	6	15

	Period by Period Scoring		
	1st	2nd	TOT
NIU	26	33	59
EMU	28	49	77



NIU at Eastern Mich.

01/13/26 George Gervin GameAbove Center , Ypsilanti
2025-26 Men's Basketball

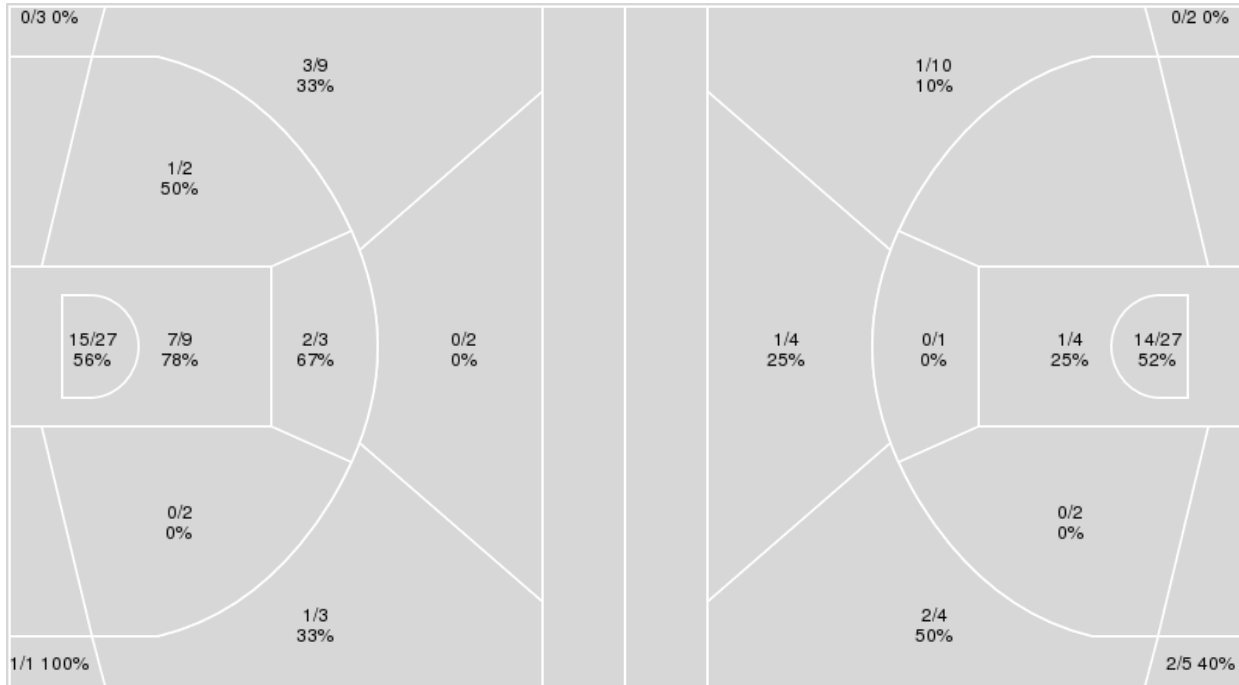
Officials: John Floyd, King Whetstone, Chris Fuller

Players => All; FG Types => All ; Results => All ;

Players => All; FG Types => All ; Results => All ;

Eastern Mich.

NIU



Eastern Mich.	M/A	%
Field Goals	30/61	49
2 Points	25/43	58
3 Points	5/18	28
Free Throws	12/15	80

NIU	M/A	%
Field Goals	21/59	36
2 Points	15/34	44
3 Points	6/25	24
Free Throws	11/19	58



NIU at Eastern Mich.

01/13/26 George Gervin GameAbove Center , Ypsilanti
2025-26 Men's Basketball

Officials: John Floyd, King Whetstone, Chris Fuller

NIU

No	Name	Mins		Score		Points Diff		Points per Min		Assists		Rebounds		Steals		Turnovers	
		On	Off	On	Off	On	Off	On	Off	On	Off	On	Off	On	Off	On	Off
0	Gianni Cobb	35:33	04:27	56-70	3-7	-14	-4	1.58	0.67	13	0	33	5	5	0	13	1
1	Makhai Valentine	31:05	08:55	48-61	11-16	-13	-5	1.54	1.23	10	3	26	12	5	0	12	2
2	Carlos Coronado Jr.	02:41	37:20	8-8	51-69	0	-18	2.99	1.37	2	11	1	37	0	5	2	12
3	Daemar Kelly	27:00	13:00	43-58	16-19	-15	-3	1.59	1.23	10	3	30	8	2	3	8	6
6	Taj Walters	36:19	03:41	52-71	7-6	-19	1	1.43	1.90	11	2	34	4	5	0	12	2
7	Hassan Washington	09:34	30:26	10-10	49-67	0	-18	1.05	1.61	1	12	12	26	3	2	4	10
25	Dylan Ducommun	28:38	11:22	32-47	27-30	-15	-3	1.12	2.38	7	6	29	9	3	2	10	4
96	Gustav Winther	29:10	10:50	46-60	13-17	-14	-4	1.58	1.20	11	2	25	13	2	3	9	5

Eastern Mich.

No	Name	Mins		Score		Points Diff		Points per Min		Assists		Rebounds		Steals		Turnovers	
		On	Off	On	Off	On	Off	On	Off	On	Off	On	Off	On	Off	On	Off
0	Gregory Lawson	14:20	25:40	35-19	42-40	16	2	2.44	1.64	5	11	16	23	1	5	7	3
1	Mak Manciel	06:32	33:28	6-10	71-49	-4	22	0.92	2.12	2	14	4	35	1	5	1	9
2	Carlos Hart	33:48	06:12	62-47	15-12	15	3	1.83	2.42	13	3	31	8	4	2	7	3
3	Mehki Ellison	06:07	33:53	13-12	64-47	1	17	2.13	1.89	1	15	7	32	2	4	2	8
4	Mohammad Habhab	36:16	03:44	72-54	5-5	18	0	1.99	1.34	16	0	32	7	6	0	9	1
5	Braelon Green	24:02	15:58	52-33	25-26	19	-1	2.16	1.57	11	5	25	14	4	2	4	6
7	Aidan Rubio	13:04	26:56	22-15	55-44	7	11	1.68	2.04	7	9	15	24	2	4	4	6
9	Addison Patterson	26:13	13:47	56-40	21-19	16	2	2.14	1.52	10	6	25	14	3	3	8	2
10	Jon Sanders	17:20	22:40	29-27	48-32	2	16	1.67	2.12	8	8	18	21	1	5	4	6
13	Godslove Nwabude	20:09	19:51	34-34	43-25	0	18	1.69	2.17	7	9	19	20	5	1	3	7
35	Merritt Alderink	02:09	37:51	4-4	73-55	0	18	1.86	1.93	0	16	3	36	1	5	1	9

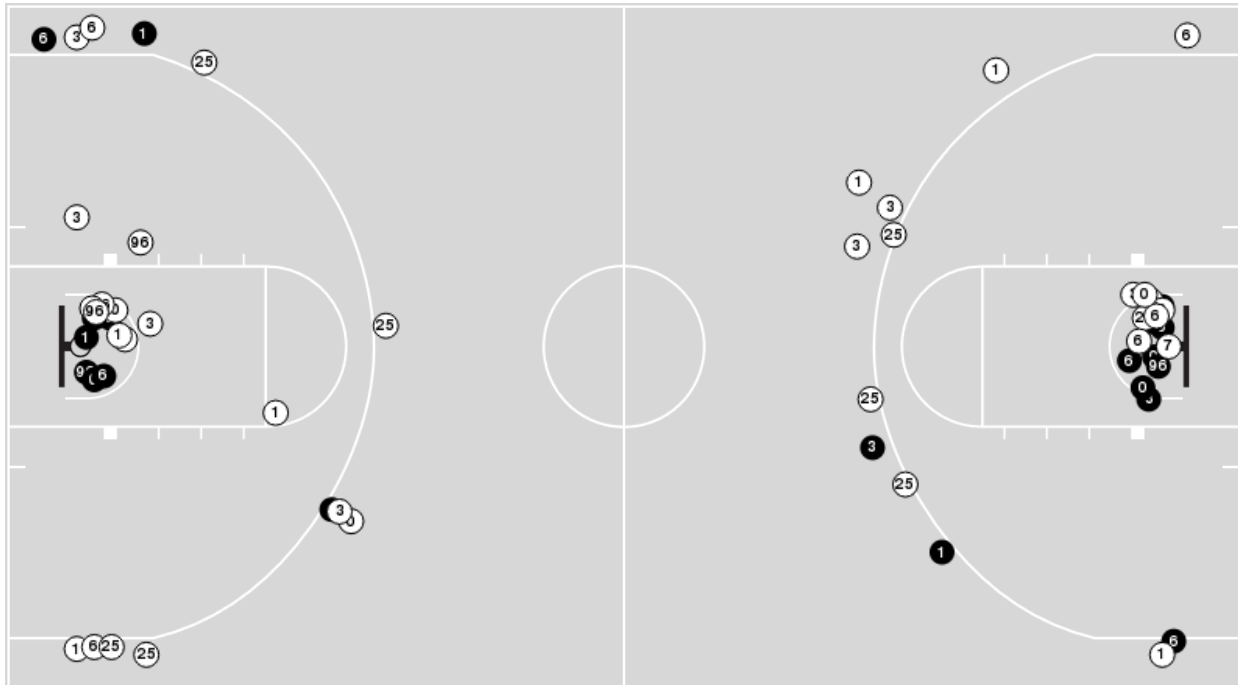


Officials: John Floyd, King Whetstone, Chris Fuller

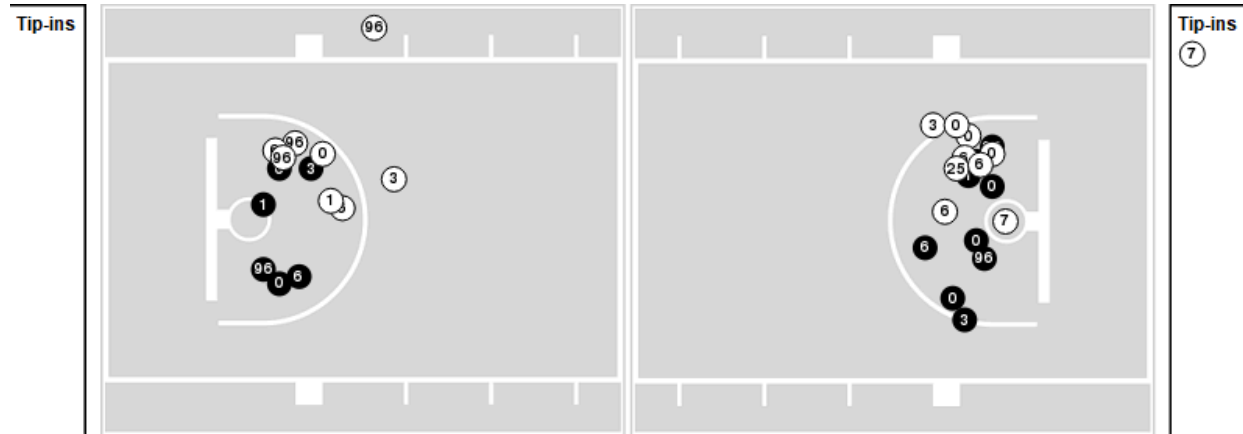
Players => All ; FG Types => All ; Results => All ;

NIU

All Field Goals



Shots in the Paint



● Made ○ Missed N - Player Number

NIU	M/A	%
Field Goals	21/59	36
2 Points	15/34	44
3 Points	6/25	24
Free Throws	11/19	58

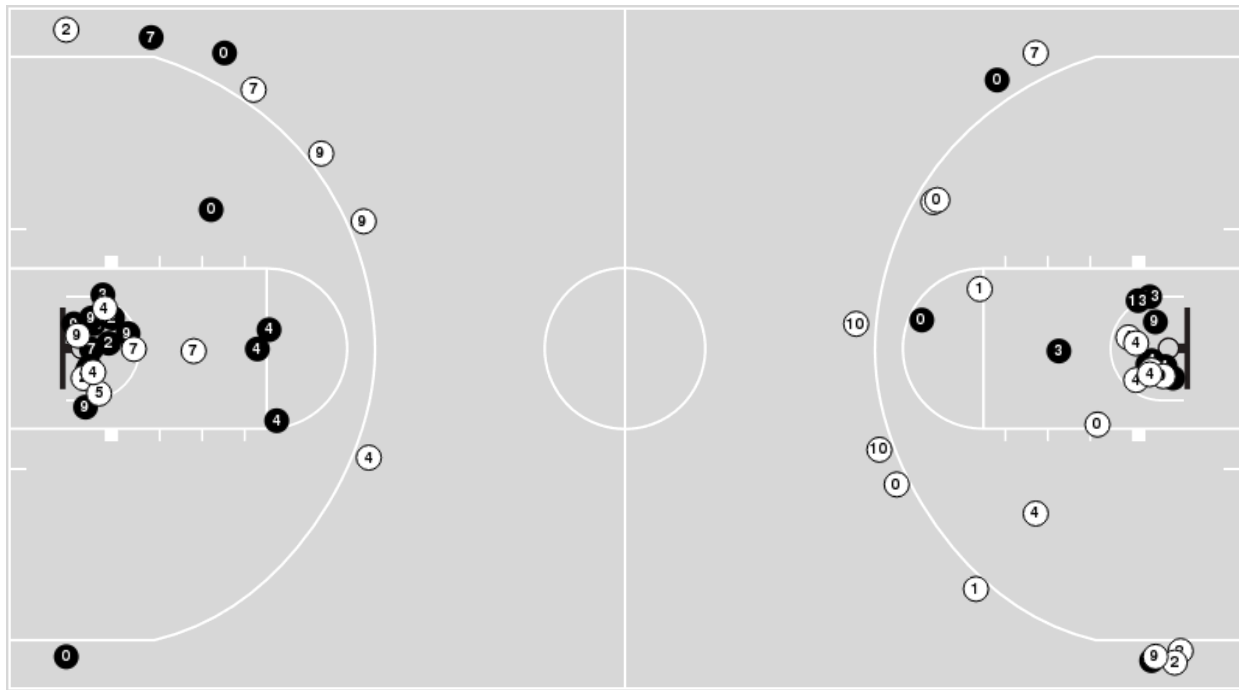
NIU	M/A	%
Points in the Paint	30 (15/31)	48
Fast Break Points	14 (6/7)	86
Second Chance Points	5 (3/10)	30
Effective FG%	41	



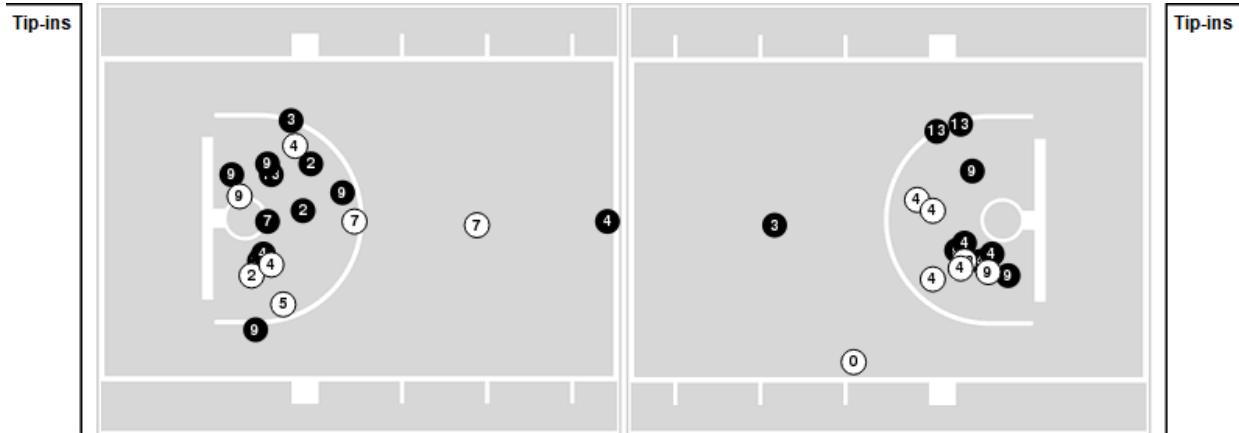
Players => All ; FG Types => All ; Results => All ;

Eastern Mich.

All Field Goals



Shots in the Paint



● Made ○ Missed N - Player Number

Eastern Mich.	M/A	%
Field Goals	30/61	49
2 Points	25/43	58
3 Points	5/18	28
Free Throws	12/15	80

Eastern Mich.	M/A	%
Points in the Paint	44 (22/36)	61
Fast Break Points	17 (11/12)	92
Second Chance Points	5 (2/5)	40
Effective FG%	53	



Officials: John Floyd, King Whetstone, Chris Fuller

NIU

Lineup	Quarter On	Time On	Quarter Off	Time Off	Time on Court	Score	Score Diff	Reb	Stl	Tov	Ass	PPP
0- Cobb G/ 1- Valentine M/ 6- Walters T/ 25- Ducommun D/ 96- Winther G/	1	20:00	1	16:46	03:14	5-4	1	3	0	0	2	1.0000
0- Cobb G/ 1- Valentine M/ 3- Kelly D/ 6- Walters T/ 96- Winther G/	1	16:46	1	15:06	01:40	2-4	-2	4	0	0	0	1.0000
1- Valentine M/ 3- Kelly D/ 6- Walters T/ 7- Washington H/ 25- Ducommun D/	1	15:06	1	13:35	01:31	2-0	2	3	0	0	0	1.0000
0- Cobb G/ 3- Kelly D/ 6- Walters T/ 7- Washington H/ 25- Ducommun D/	1	13:35	1	11:29	02:06	3-0	3	2	0	1	1	0.7500
0- Cobb G/ 3- Kelly D/ 6- Walters T/ 25- Ducommun D/ 96- Winther G/	1	11:29	1	07:57	03:32	4-7	-3	3	0	0	0	0.8000
0- Cobb G/ 1- Valentine M/ 2- Coronado Jr. C/ 6- Walters T/ 96- Winther G/	1	07:57	1	07:42	00:15	2-0	2	0	0	0	0	2.2727
0- Cobb G/ 1- Valentine M/ 2- Coronado Jr. C/ 3- Kelly D/ 96- Winther G/	1	07:42	1	05:43	01:59	6-4	2	1	0	1	2	1.7442
0- Cobb G/ 1- Valentine M/ 3- Kelly D/ 25- Ducommun D/ 96- Winther G/	1	05:43	1	04:01	01:42	1-2	-1	3	0	1	0	0.3472
0- Cobb G/ 1- Valentine M/ 6- Walters T/ 25- Ducommun D/ 96- Winther G/	1	04:01	1	03:19	00:42	0-0	0	1	0	1	0	0.0000
1- Valentine M/ 3- Kelly D/ 6- Walters T/ 25- Ducommun D/ 96- Winther G/	1	03:19	1	00:29	02:49	1-7	-6	2	0	1	0	0.2049
1- Valentine M/ 3- Kelly D/ 6- Walters T/ 7- Washington H/ 25- Ducommun D/	1	00:29	1	00:29	00:00	0-0	0	0	0	0	0	0.0000
0- Cobb G/ 3- Kelly D/ 6- Walters T/ 7- Washington H/ 25- Ducommun D/	1	00:29	2	20:00	00:29	0-0	0	1	0	0	0	0.0000
0- Cobb G/ 1- Valentine M/ 6- Walters T/ 25- Ducommun D/ 96- Winther G/	2	20:00	2	14:46	05:14	8-11	-3	1	1	3	1	0.8584
0- Cobb G/ 3- Kelly D/ 6- Walters T/ 7- Washington H/ 25- Ducommun D/	2	14:46	2	13:40	01:06	0-2	-2	3	0	0	0	0.0000
1- Valentine M/ 3- Kelly D/ 6- Walters T/ 7- Washington H/ 25- Ducommun D/	2	13:40	2	13:34	00:06	0-0	0	0	0	0	0	0.0000
1- Valentine M/ 3- Kelly D/ 6- Walters T/ 25- Ducommun D/ 96- Winther G/	2	13:34	2	13:34	00:00	0-0	0	0	0	0	0	0.0000
0- Cobb G/ 1- Valentine M/ 3- Kelly D/ 6- Walters T/ 96- Winther G/	2	13:34	2	11:49	01:45	5-2	3	1	0	0	1	2.5000
0- Cobb G/ 1- Valentine M/ 3- Kelly D/ 6- Walters T/ 7- Washington H/	2	11:49	2	10:18	01:31	4-5	-1	1	2	1	0	1.0000
0- Cobb G/ 1- Valentine M/ 6- Walters T/ 7- Washington H/ 25- Ducommun D/	2	10:18	2	07:48	02:30	0-3	-3	2	1	2	0	0.0000
0- Cobb G/ 1- Valentine M/ 3- Kelly D/ 6- Walters T/ 96- Winther G/	2	07:48	2	06:23	01:25	1-5	-4	0	0	0	0	0.5319
0- Cobb G/ 1- Valentine M/ 6- Walters T/ 25- Ducommun D/ 96- Winther G/	2	06:23	2	05:33	00:50	0-0	0	1	1	0	0	0.0000
0- Cobb G/ 1- Valentine M/ 3- Kelly D/ 6- Walters T/ 96- Winther G/	2	05:33	2	02:52	02:41	7-10	-3	2	0	2	3	1.1667
0- Cobb G/ 3- Kelly D/ 6- Walters T/ 25- Ducommun D/ 96- Winther G/	2	02:52	2	01:31	01:21	4-3	1	3	0	0	2	1.3333
0- Cobb G/ 1- Valentine M/ 6- Walters T/ 25- Ducommun D/ 96- Winther G/	2	01:31	2	01:31	00:00	0-1	-1	0	0	0	0	0.0000
0- Cobb G/ 1- Valentine M/ 6- Walters T/ 7- Washington H/ 25- Ducommun D/	2	01:31	2	01:16	00:15	1-0	1	0	0	0	0	1.1364
0- Cobb G/ 1- Valentine M/ 3- Kelly D/ 6- Walters T/ 25- Ducommun D/	2	01:16	2	00:37	00:38	1-3	-2	1	0	0	0	1.1364
0- Cobb G/ 1- Valentine M/ 2- Coronado Jr. C/ 3- Kelly D/ 6- Walters T/	2	00:37	2	00:31	00:05	0-0	0	0	0	0	0	0.0000
0- Cobb G/ 1- Valentine M/ 3- Kelly D/ 6- Walters T/ 25- Ducommun D/	2	00:31	2	00:20	00:10	2-0	2	0	0	0	1	2.0000
0- Cobb G/ 2- Coronado Jr. C/ 3- Kelly D/ 6- Walters T/ 25- Ducommun D/	2	00:20	2	00:00	00:20	0-4	-4	0	0	1	0	0.0000



Officials: John Floyd, King Whetstone, Chris Fuller

Eastern Mich.

Lineup	Quarter On	Time On	Quarter Off	Time Off	Time on Court	Score	Score Diff	Reb	Stl	Tov	Ass	PPP
2- Hart C/ 4- Habhab M/ 5- Green B/ 9- Patterson A/ 13- Nwabude G/	1	20:00	1	15:06	04:54	8-7	1	4	0	0	1	1.1429
2- Hart C/ 4- Habhab M/ 7- Rubio A/ 10- Sanders J/ 35- Alderink M/	1	15:06	1	13:35	01:31	0-2	-2	1	0	0	0	0.0000
1- Manciel M/ 4- Habhab M/ 7- Rubio A/ 10- Sanders J/ 35- Alderink M/	1	13:35	1	13:35	00:00	0-0	0	0	0	0	0	0.0000
1- Manciel M/ 4- Habhab M/ 7- Rubio A/ 10- Sanders J/ 13- Nwabude G/	1	13:35	1	12:00	01:35	0-3	-3	1	0	0	0	0.0000
1- Manciel M/ 2- Hart C/ 4- Habhab M/ 9- Patterson A/ 10- Sanders J/	1	12:00	1	11:36	00:24	0-0	0	0	0	1	0	0.0000
0- Lawson G/ 2- Hart C/ 4- Habhab M/ 9- Patterson A/ 10- Sanders J/	1	11:36	1	09:49	01:47	5-4	1	1	0	0	1	2.5000
0- Lawson G/ 2- Hart C/ 3- Ellison M/ 4- Habhab M/ 9- Patterson A/	1	09:49	1	09:37	00:12	1-0	1	0	0	0	0	2.2727
0- Lawson G/ 2- Hart C/ 3- Ellison M/ 9- Patterson A/ 13- Nwabude G/	1	09:37	1	07:57	01:40	1-0	1	4	0	1	0	0.2907
0- Lawson G/ 2- Hart C/ 3- Ellison M/ 4- Habhab M/ 13- Nwabude G/	1	07:57	1	07:42	00:15	0-2	-2	0	0	0	0	0.0000
1- Manciel M/ 2- Hart C/ 3- Ellison M/ 4- Habhab M/ 13- Nwabude G/	1	07:42	1	05:43	01:59	4-6	-2	0	1	0	1	1.3333
1- Manciel M/ 2- Hart C/ 3- Ellison M/ 4- Habhab M/ 9- Patterson A/	1	05:43	1	04:58	00:45	0-0	0	1	0	0	0	0.0000
1- Manciel M/ 2- Hart C/ 4- Habhab M/ 9- Patterson A/ 10- Sanders J/	1	04:58	1	03:09	01:49	2-1	1	2	0	0	1	0.5000
4- Habhab M/ 5- Green B/ 9- Patterson A/ 10- Sanders J/ 13- Nwabude G/	1	03:09	1	03:09	00:00	0-1	-1	0	0	0	0	0.0000
4- Habhab M/ 5- Green B/ 7- Rubio A/ 10- Sanders J/ 13- Nwabude G/	1	03:09	1	01:30	01:39	2-0	2	3	1	0	1	1.0000
2- Hart C/ 4- Habhab M/ 5- Green B/ 7- Rubio A/ 10- Sanders J/	1	01:30	1	00:29	01:00	5-0	5	2	0	0	2	2.5000
0- Lawson G/ 2- Hart C/ 4- Habhab M/ 7- Rubio A/ 10- Sanders J/	1	00:29	2	20:00	00:29	0-0	0	0	0	0	0	0.0000
2- Hart C/ 4- Habhab M/ 5- Green B/ 9- Patterson A/ 13- Nwabude G/	2	20:00	2	14:46	05:14	11-8	3	3	3	2	4	1.3033
2- Hart C/ 4- Habhab M/ 5- Green B/ 9- Patterson A/ 10- Sanders J/	2	14:46	2	13:40	01:06	2-0	2	3	0	0	1	0.6667
2- Hart C/ 5- Green B/ 7- Rubio A/ 10- Sanders J/ 13- Nwabude G/	2	13:40	2	11:49	01:51	2-5	-3	3	0	0	0	1.0000
0- Lawson G/ 7- Rubio A/ 9- Patterson A/ 10- Sanders J/ 13- Nwabude G/	2	11:49	2	11:36	00:13	0-0	0	0	0	0	0	0.0000
0- Lawson G/ 4- Habhab M/ 7- Rubio A/ 9- Patterson A/ 10- Sanders J/	2	11:36	2	10:18	01:18	5-4	1	1	0	2	2	1.2500
0- Lawson G/ 2- Hart C/ 4- Habhab M/ 7- Rubio A/ 10- Sanders J/	2	10:18	2	09:33	00:45	0-0	0	1	0	1	0	0.0000
0- Lawson G/ 2- Hart C/ 4- Habhab M/ 5- Green B/ 7- Rubio A/	2	09:33	2	07:11	02:22	6-1	5	2	0	1	2	1.5000
0- Lawson G/ 2- Hart C/ 4- Habhab M/ 5- Green B/ 9- Patterson A/	2	07:11	2	05:33	01:38	2-0	2	3	0	1	0	0.6667
2- Hart C/ 4- Habhab M/ 5- Green B/ 9- Patterson A/ 10- Sanders J/	2	05:33	2	04:24	01:09	4-5	-1	0	0	0	0	1.3889
4- Habhab M/ 5- Green B/ 9- Patterson A/ 10- Sanders J/ 13- Nwabude G/	2	04:24	2	03:41	00:43	2-2	0	0	0	0	0	2.0000
0- Lawson G/ 4- Habhab M/ 5- Green B/ 9- Patterson A/ 13- Nwabude G/	2	03:41	2	03:35	00:06	2-0	2	1	0	0	0	2.2727
0- Lawson G/ 2- Hart C/ 4- Habhab M/ 5- Green B/ 9- Patterson A/	2	03:35	2	01:31	02:04	4-4	0	1	0	0	0	0.9009
0- Lawson G/ 2- Hart C/ 5- Green B/ 9- Patterson A/ 13- Nwabude G/	2	01:31	2	01:31	00:00	2-0	2	0	0	0	0	2.2727
0- Lawson G/ 2- Hart C/ 4- Habhab M/ 5- Green B/ 9- Patterson A/	2	01:31	2	01:16	00:15	0-0	0	0	0	0	0	0.0000
0- Lawson G/ 2- Hart C/ 3- Ellison M/ 4- Habhab M/ 9- Patterson A/	2	01:16	2	00:37	00:38	3-2	1	0	0	0	0	2.0833
0- Lawson G/ 3- Ellison M/ 4- Habhab M/ 9- Patterson A/ 35- Alderink M/	2	00:37	2	00:19	00:18	2-2	0	1	0	1	0	1.0638
0- Lawson G/ 3- Ellison M/ 4- Habhab M/ 7- Rubio A/ 35- Alderink M/	2	00:19	2	00:00	00:19	2-0	2	1	1	0	0	2.0000



NIU at Eastern Mich.

01/13/26 George Gervin GameAbove Center , Ypsilanti
2025-26 Men's Basketball

Officials: John Floyd, King Whetstone, Chris Fuller

NIU

Lineup	Time	Score	Score Diff	Pts/Min	Reb	Stl	Tov	Ass	PPP
0- Cobb G/ 1- Valentine M/ 6- Walters T/ 25- Ducommun D/ 96- Winther G/	10:00	13-16	-3	1.3000	6	2	4	3	0.7757
0- Cobb G/ 1- Valentine M/ 3- Kelly D/ 6- Walters T/ 96- Winther G/	07:31	15-21	-6	1.9956	7	0	2	4	1.2626
0- Cobb G/ 3- Kelly D/ 6- Walters T/ 25- Ducommun D/ 96- Winther G/	04:53	8-10	-2	1.6382	6	0	0	2	1.0000
0- Cobb G/ 3- Kelly D/ 6- Walters T/ 7- Washington H/ 25- Ducommun D/	03:41	3-2	1	0.8141	6	0	1	1	0.4658
1- Valentine M/ 3- Kelly D/ 6- Walters T/ 25- Ducommun D/ 96- Winther G/	02:49	1-7	-6	0.3531	2	0	1	0	0.2049
0- Cobb G/ 1- Valentine M/ 6- Walters T/ 7- Washington H/ 25- Ducommun D/	02:45	1-3	-2	0.3636	2	1	2	0	0.1701
0- Cobb G/ 1- Valentine M/ 2- Coronado Jr. C/ 3- Kelly D/ 96- Winther G/	01:59	6-4	2	3.0252	1	0	1	2	1.7442
0- Cobb G/ 1- Valentine M/ 3- Kelly D/ 25- Ducommun D/ 96- Winther G/	01:42	1-2	-1	0.5882	3	0	1	0	0.3472
1- Valentine M/ 3- Kelly D/ 6- Walters T/ 7- Washington H/ 25- Ducommun D/	01:37	2-0	2	1.2371	3	0	0	0	0.8197
0- Cobb G/ 1- Valentine M/ 3- Kelly D/ 6- Walters T/ 7- Washington H/	01:31	4-5	-1	2.6374	1	2	1	0	1.0000
0- Cobb G/ 1- Valentine M/ 3- Kelly D/ 6- Walters T/ 25- Ducommun D/	00:49	3-3	0	3.6364	1	0	0	1	1.5957
0- Cobb G/ 2- Coronado Jr. C/ 3- Kelly D/ 6- Walters T/ 25- Ducommun D/	00:20	0-4	-4	0.0000	0	0	1	0	0.0000
0- Cobb G/ 1- Valentine M/ 2- Coronado Jr. C/ 6- Walters T/ 96- Winther G/	00:15	2-0	2	8.0000	0	0	0	0	2.2727
0- Cobb G/ 1- Valentine M/ 2- Coronado Jr. C/ 3- Kelly D/ 6- Walters T/	00:05	0-0	0	0.0000	0	0	0	0	0.0000



NIU at Eastern Mich.

01/13/26 George Gervin GameAbove Center , Ypsilanti
2025-26 Men's Basketball

Game Time: 6:30 PM
Game Duration: 2:01
Attendance: 1,749

Officials: John Floyd, King Whetstone, Chris Fuller

Eastern Mich.

Lineup	Time	Score	Score Diff	Pts/Min	Reb	Stl	Tov	Ass	PPP
2- Hart C/ 4- Habhab M/ 5- Green B/ 9- Patterson A/ 13- Nwabude G/	10:08	19-15	4	1.8750	7	3	2	5	1.2306
0- Lawson G/ 2- Hart C/ 4- Habhab M/ 5- Green B/ 9- Patterson A/	03:57	6-4	2	1.5190	4	0	1	0	0.8065
0- Lawson G/ 2- Hart C/ 4- Habhab M/ 5- Green B/ 7- Rubio A/	02:22	6-1	5	2.5352	2	0	1	2	1.5000
2- Hart C/ 4- Habhab M/ 5- Green B/ 9- Patterson A/ 10- Sanders J/	02:15	6-5	1	2.6667	3	0	0	1	1.0204
1- Manciel M/ 2- Hart C/ 4- Habhab M/ 9- Patterson A/ 10- Sanders J/	02:13	2-1	1	0.9023	2	0	1	1	0.4000
1- Manciel M/ 2- Hart C/ 3- Ellison M/ 4- Habhab M/ 13- Nwabude G/	01:59	4-6	-2	2.0168	0	1	0	1	1.3333
2- Hart C/ 5- Green B/ 7- Rubio A/ 10- Sanders J/ 13- Nwabude G/	01:51	2-5	-3	1.0811	3	0	0	0	1.0000
0- Lawson G/ 2- Hart C/ 4- Habhab M/ 9- Patterson A/ 10- Sanders J/	01:47	5-4	1	2.8037	1	0	0	1	2.5000
0- Lawson G/ 2- Hart C/ 3- Ellison M/ 9- Patterson A/ 13- Nwabude G/	01:40	1-0	1	0.6000	4	0	1	0	0.2907
4- Habhab M/ 5- Green B/ 7- Rubio A/ 10- Sanders J/ 13- Nwabude G/	01:39	2-0	2	1.2121	3	1	0	1	1.0000
1- Manciel M/ 4- Habhab M/ 7- Rubio A/ 10- Sanders J/ 13- Nwabude G/	01:35	0-3	-3	0.0000	1	0	0	0	0.0000
2- Hart C/ 4- Habhab M/ 7- Rubio A/ 10- Sanders J/ 35- Alderink M/	01:31	0-2	-2	0.0000	1	0	0	0	0.0000
0- Lawson G/ 4- Habhab M/ 7- Rubio A/ 9- Patterson A/ 10- Sanders J/	01:18	5-4	1	3.8462	1	0	2	2	1.2500
0- Lawson G/ 2- Hart C/ 4- Habhab M/ 7- Rubio A/ 10- Sanders J/	01:14	0-0	0	0.0000	1	0	1	0	0.0000
2- Hart C/ 4- Habhab M/ 5- Green B/ 7- Rubio A/ 10- Sanders J/	01:00	5-0	5	4.9261	2	0	0	2	2.5000
0- Lawson G/ 2- Hart C/ 3- Ellison M/ 4- Habhab M/ 9- Patterson A/	00:50	4-2	2	4.7904	0	0	0	0	2.1277
1- Manciel M/ 2- Hart C/ 3- Ellison M/ 4- Habhab M/ 9- Patterson A/	00:45	0-0	0	0.0000	1	0	0	0	0.0000
4- Habhab M/ 5- Green B/ 9- Patterson A/ 10- Sanders J/ 13- Nwabude G/	00:43	2-3	-1	2.7907	0	0	0	0	2.0000
0- Lawson G/ 3- Ellison M/ 4- Habhab M/ 7- Rubio A/ 35- Alderink M/	00:19	2-0	2	6.0914	1	1	0	0	2.0000
0- Lawson G/ 3- Ellison M/ 4- Habhab M/ 9- Patterson A/ 35- Alderink M/	00:18	2-2	0	6.5934	1	0	1	0	1.0638
0- Lawson G/ 2- Hart C/ 3- Ellison M/ 4- Habhab M/ 13- Nwabude G/	00:15	0-2	-2	0.0000	0	0	0	0	0.0000
0- Lawson G/ 7- Rubio A/ 9- Patterson A/ 10- Sanders J/ 13- Nwabude G/	00:13	0-0	0	0.0000	0	0	0	0	0.0000
0- Lawson G/ 4- Habhab M/ 5- Green B/ 9- Patterson A/ 13- Nwabude G/	00:06	2-0	2	20.0000	1	0	0	0	2.2727
1- Manciel M/ 4- Habhab M/ 7- Rubio A/ 10- Sanders J/ 35- Alderink M/	00:00	0-0	0	NaN	0	0	0	0	0.0000
0- Lawson G/ 2- Hart C/ 5- Green B/ 9- Patterson A/ 13- Nwabude G/	00:00	2-0	2	∞	0	0	0	0	2.2727